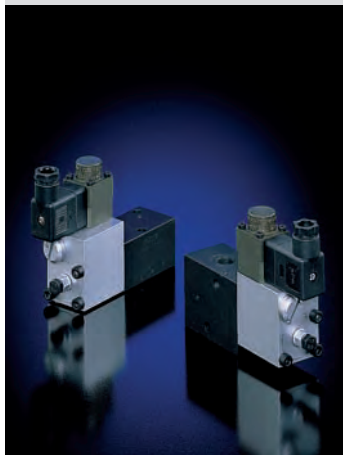


Proportional pressure limiting valves type PMV and PDV

These pressure limiting valves are electrically remote controlled and rule the hydraulic pressure within the system. These pressure limiting valves are electrically remote controlled and safe guard the system against an excessive pressure whose value can be altered.

These valves are either directly actuated (type PMV) or piloted (type PDV). There is a minimum pressure necessary of 3 bar up-stream to ensure flawless operation of the integrated prop. pressure reducing valve.



Nomenclature: Prop. pressure limiting valve (directly or pilot operated)

Design: Individual valve for pipe connection
Individual valve
Manifold mounting

Adjustability: Electro-proportional

p_{max} : 700 bar

Q_{max} : 120 lpm

Basic types and general parameters

Basic type	PMV				PDV			Symbol	
Function	Pressure limiting valve (directly operated)				Pressure limiting valve (piloted)			Pipe connection	Manifold mounting valve
Size	4	5	6	8	3	4	5		
Flow Q_{max} (lpm)	16	16 ... 60	60 ... 75	120	40	80	120		
Pressure range:									
Pressure p_{max} (bar)	41: 180 42: 290 43: 440 44: 700	41: 110 42: 180 43: 270 44: 450	41: 80 42: 130 43: 190 44: 320	41: 45 42: 70 43: 110 44: 180	N: 130 M: 200 H: 350	N: 130 M: 200 H: 350	N: 130 M: 200 H: 350		
Tapped ports (BSPP) ¹⁾	G 1/4 G 3/8	G 1/4 G 3/8 G 1/2	G 3/8 G 1/2 G 3/4	G 3/4 G 1	G 1/2	G 3/4	G 1		

1) Version for pipe connection

Additional versions

- Version for separate control oil supply, enabling flawless pressure reduction starting from almost 0 bar, no leakage of the main pump circuit (type PMVS or PMVPS) (see also "Additional information")
- Additional 2/2-way solenoid valve for arbitrary idle circulation (only type PDV)

Solenoid voltage

- 12V or 24V DC
- Control via proportional amplifier (see also "Additional information")

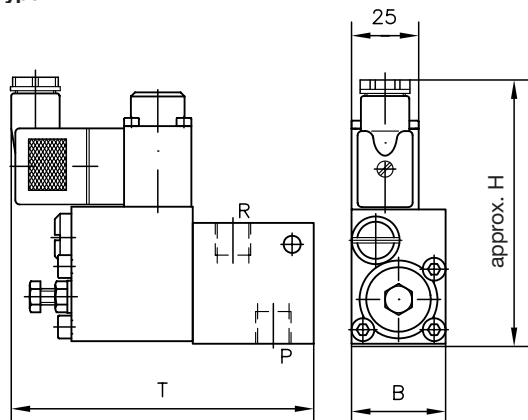
Order examples

PMVP4 - 44 - 24

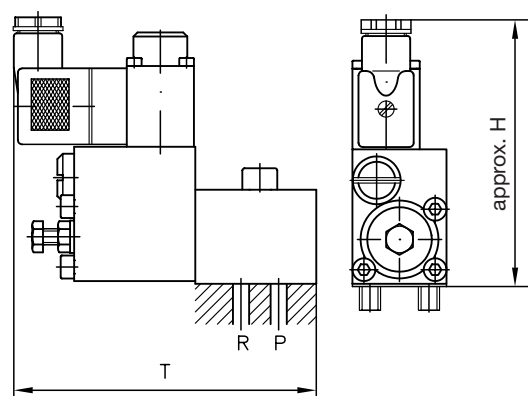
Prop. pressure limiting valve type PMV, manifold mounting version (coding P), size 4, adjustable pressure range 5 ... 700 bar (coding 44), solenoid voltage 24V DC

Dimensions

Type PMV



Type PMVP (see order example)



Basic type	H	B	T	m (kg)
PMV 4	97	35	135	1.2
PMV 5	98	35	140	1.2
PMV 6	102	40	150	1.5
PMV 8	107	45	160	1.9
PMVP 4	95	35	135	1.1
PMVP 5	95	40	140	1.2
PMVP 6	95	50	140	1.3
PMVP 8	97	60	150	1.7

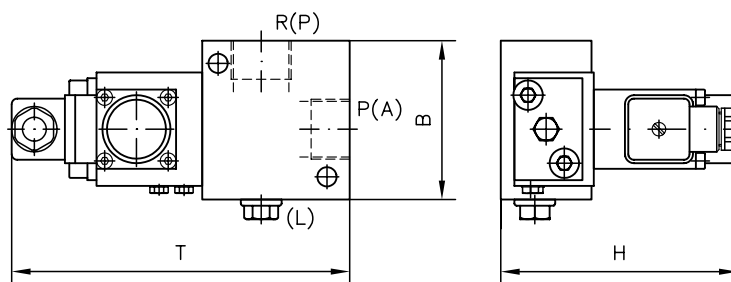
Additional information

- Prop. pressure limiting valves type PMV(S), PMVP(S) D 7485
- Prop. pressure valves type PDV D 7486
- Prop. pressure limiting valves type NPMVP Sk 7485 N
- Prop. pressure limiting valves type PMV and PMVP (conform Atex) Sk 7485 863

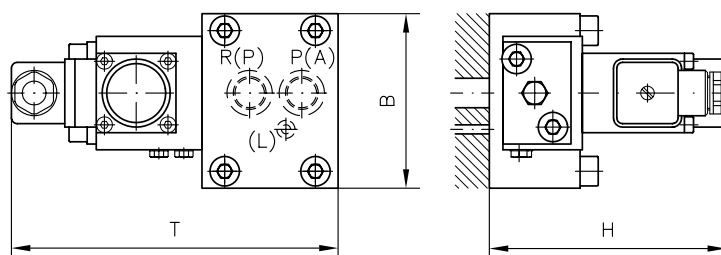
PDV 5 GH - 12

Prop. pressure limiting valve type PDV, version for pipe connection (coding G), size 5, adjustable pressure range 5 to 350 bar (coding H), solenoid voltage 12V DC

Type PDV..G (see order example)



Type PDV..P



Basic type	H	B	T	m (kg)
PDV 3G..	96	66	150	1.8
PDV 4G..	99.5	71	155	2.2
PDV 5G..	104.5	73	170	2.7
PDV 4P..	99.5	78	150	2.7
PDV 5P..	104.5	81	178	3.2

All dimensions in mm, subject to change without notice!

- Prop. amplifier type EV1M (module) D 7831/1
- Prop. amplifier type EV1G (module) D 7837
- Prop. amplifier type EV22K (card version) D 7817/1
- Programmable logical valve control type PLVC D 7845 ++
- See also section "Devices for special applications" (Proportional valves, Devices for up to 700 bar)

For page and section of the devices additionally listed, see type index